

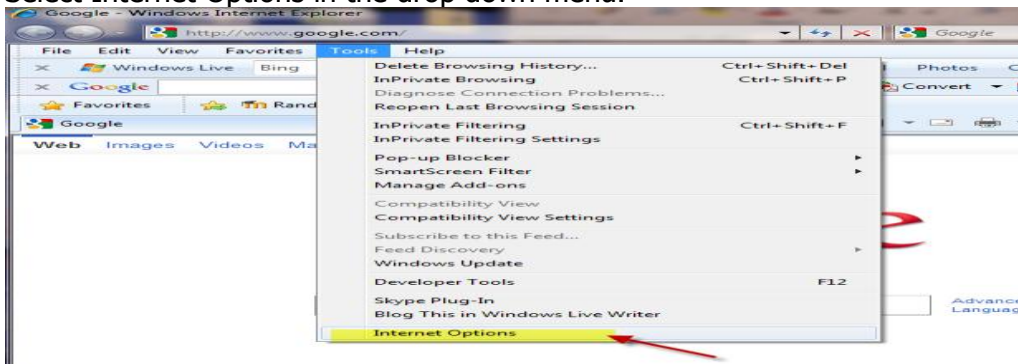
Internet Explorer

Below are step-by-step instructions for adjusting your browser to allow cookies and turn off your Pop-up blockers to enable Internet Explorer and Moodle to work together.

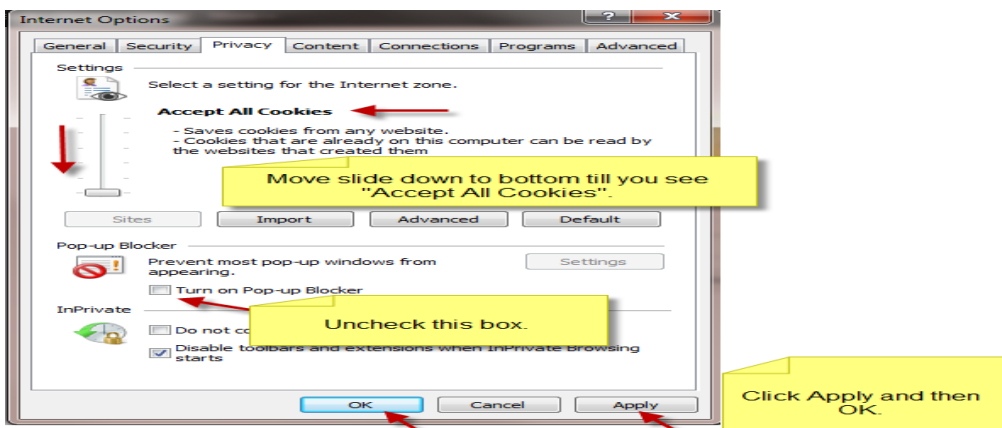
1. Click on the Tools-menu in Internet Explorer.



2. Select Internet Options in the drop down menu.



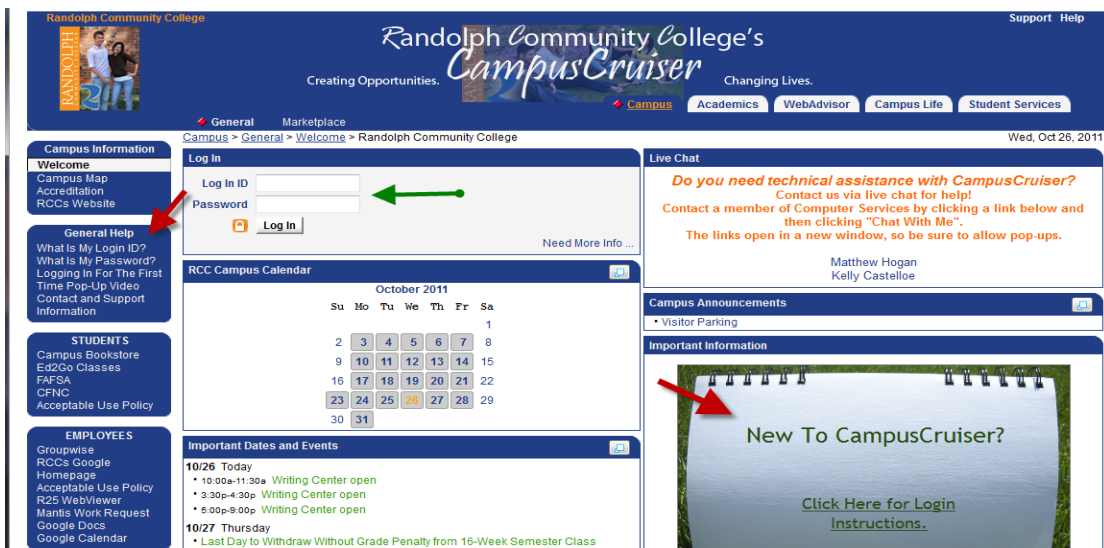
3. Click on the Privacy tab near the top of the window and do the steps below.



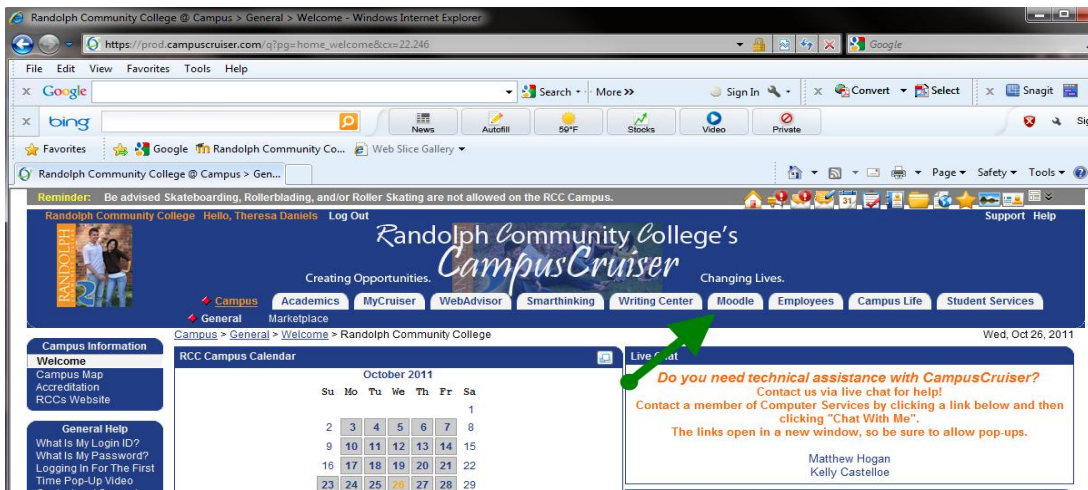
4. Now you are ready to login to Campus Cruiser. Go to <http://www.randolph.edu/> click on Students, then Campus Cruiser.



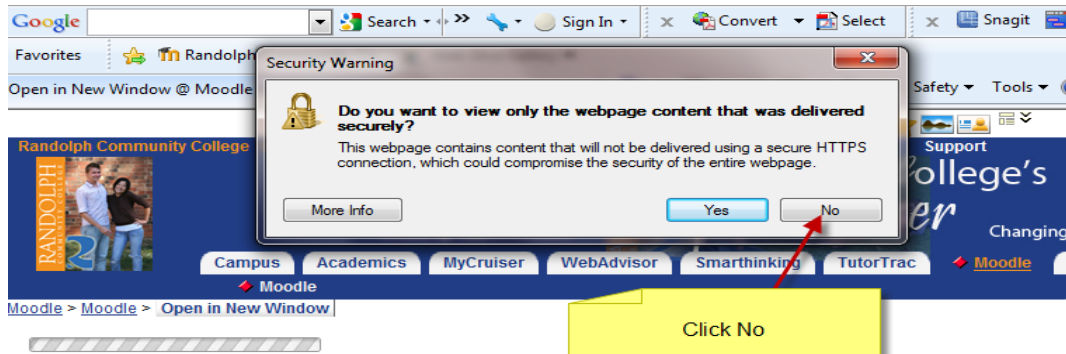
5. Login to Campus Cruiser.



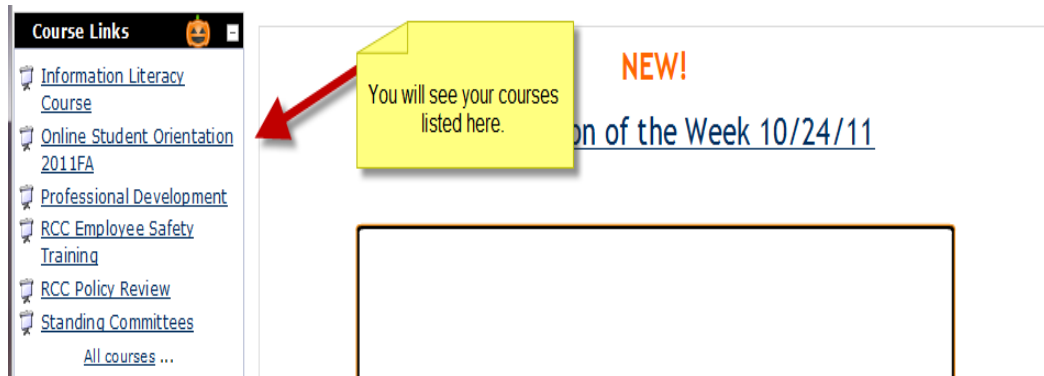
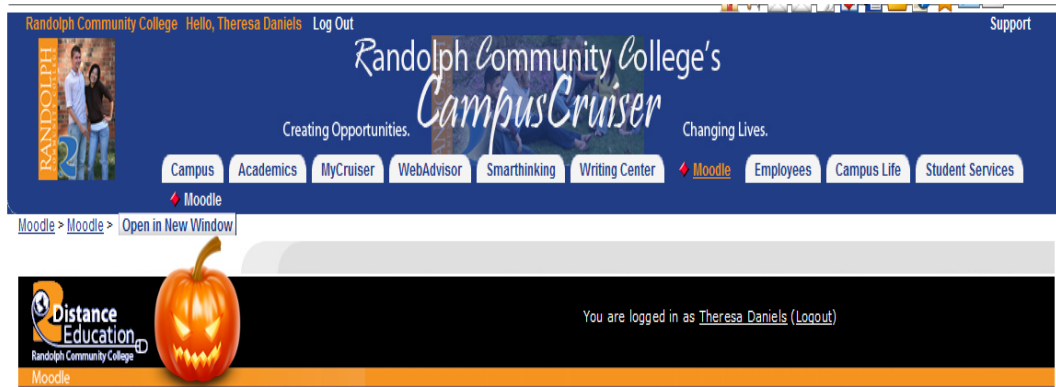
6. Click on the Moodle tab.



7. Click No



8. Now you are logged into Campus Cruiser and Moodle.



9. To help prevent time out issues try this tip: Click on a course in your listing.



10. Then click on "Home" in the breadcrumb trail. This will cause the Campus Cruiser banner to disappear and now you are logged completely into Moodle.

