

Mozilla Firefox

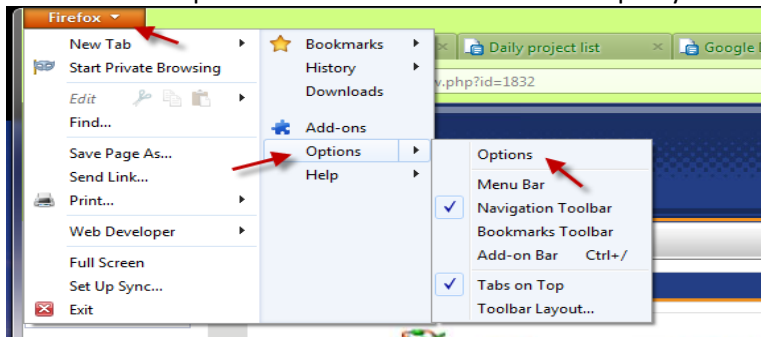
Below are step-by-step instructions for adjusting your browser to allow cookies and turn off your Pop-up blockers.

Mozilla Firefox (older version) - Follow these steps:

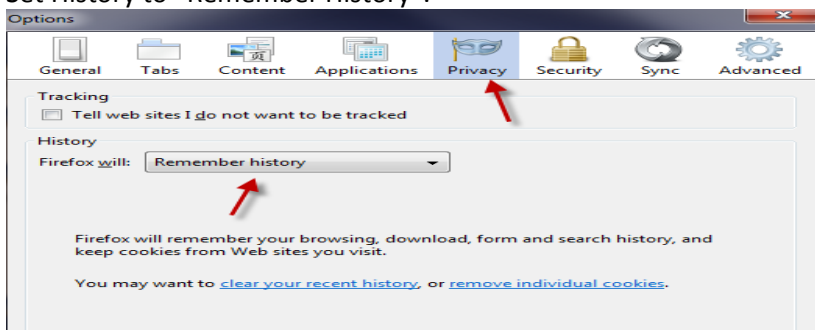
1. Click on the Tools-menu.
2. Click on the Options items in the menu – a new window will open.
3. Click on the Privacy tab.
4. Expand the Cookies section.
5. Check the Enable Cookies and Accept cookies normally checkboxes.
6. Click on the Content tab.
7. Make sure the Block pop-up windows box is unchecked.
8. Save changes by clicking OK.

Mozilla Firefox (newest version):

1. Click on the dropdown box beside of “Firefox” at top of your screen.

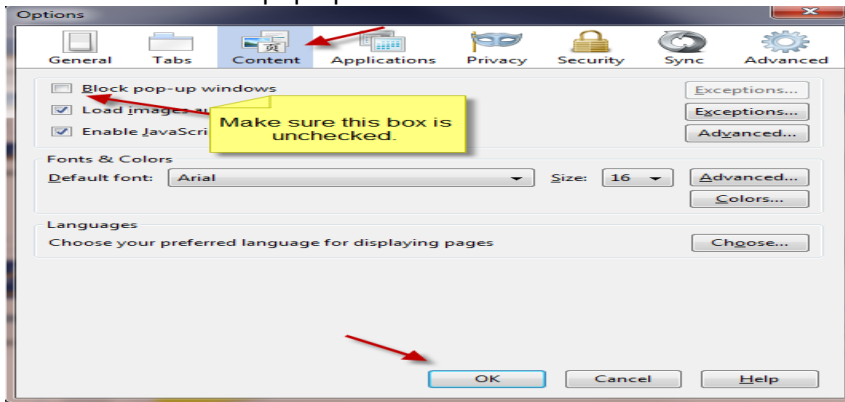


2. Choose Options
3. Click on Privacy tab.
4. Set History to “Remember History”.



5. Click on the Content tab.

6. Make sure the Block pop-up windows box is unchecked.

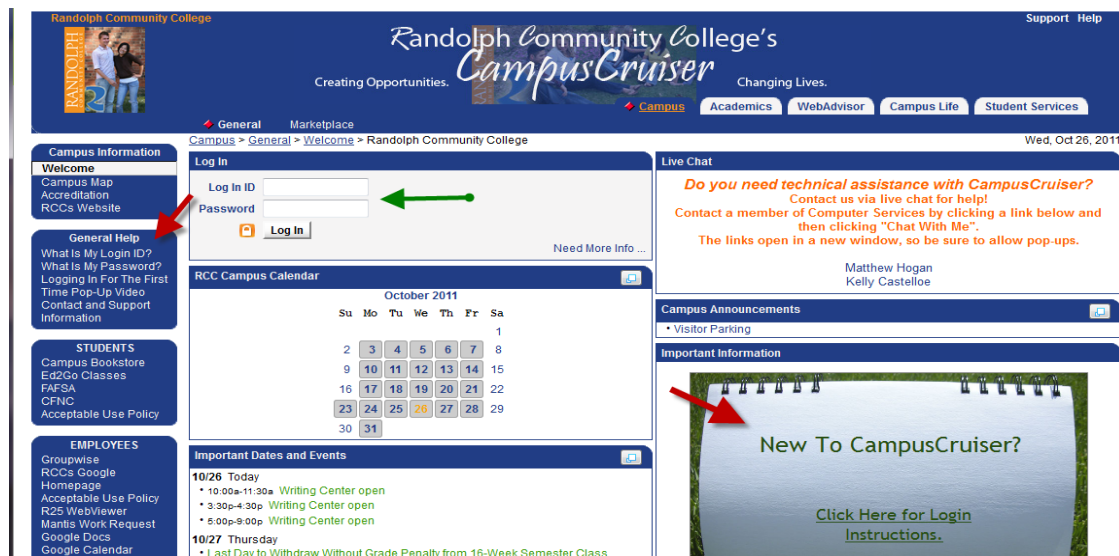


7. Click OK at the bottom.

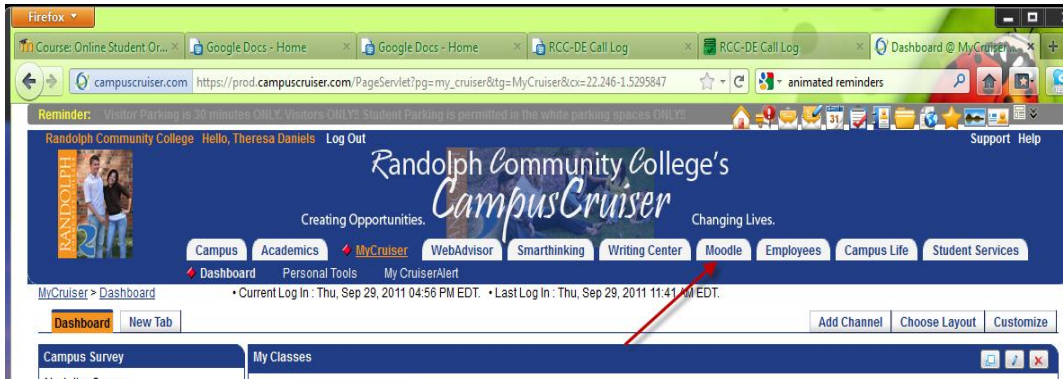
8. Now you are ready to login to Campus Cruiser. Go to <http://www.randolph.edu/> click on Students, then Campus Cruiser.



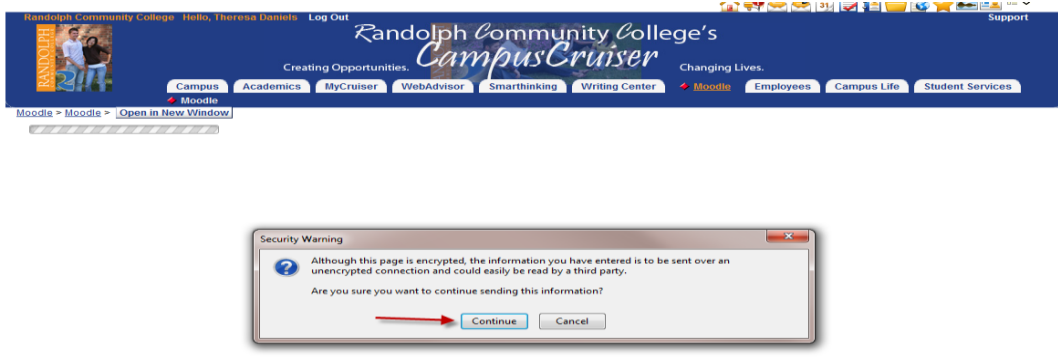
9. Login to Campus Cruiser



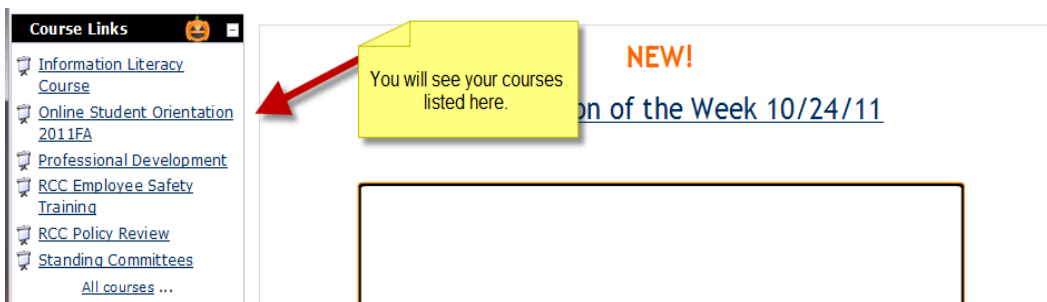
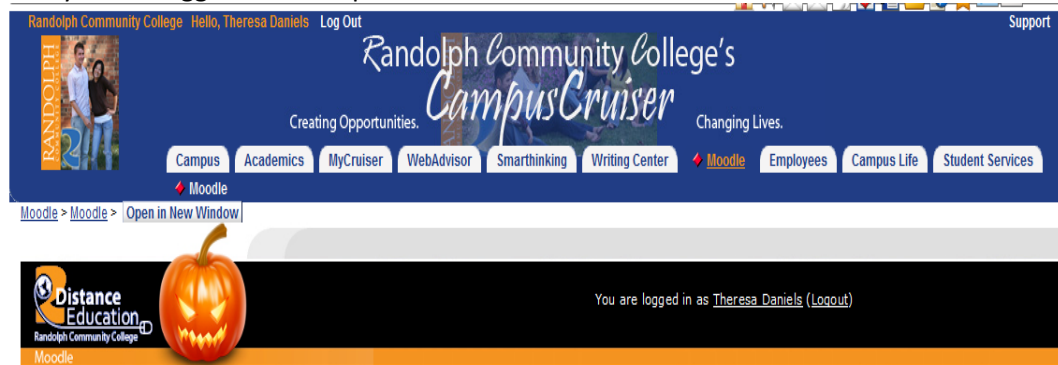
10. Click on the Moodle tab.



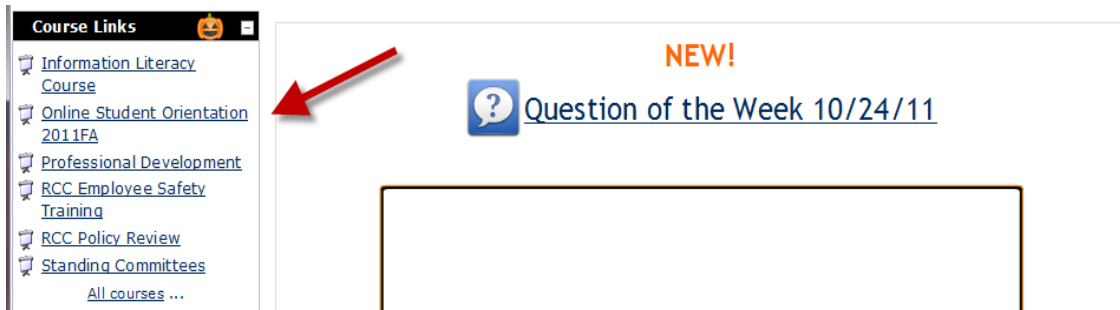
11. Click Continue



12. Now you are logged into Campus Cruiser and Moodle.



13. To help prevent time out issues try this tip:
Click on a course in your listing



14. Click on "Home" in the breadcrumb trail. This will cause the Campus Cruiser banner to disappear and now you are logged completely into Moodle.

