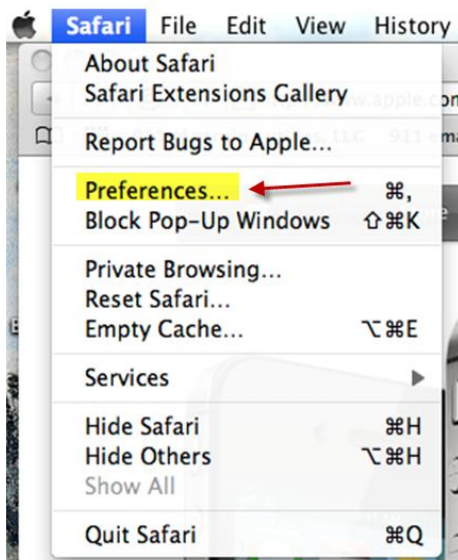


## Safari

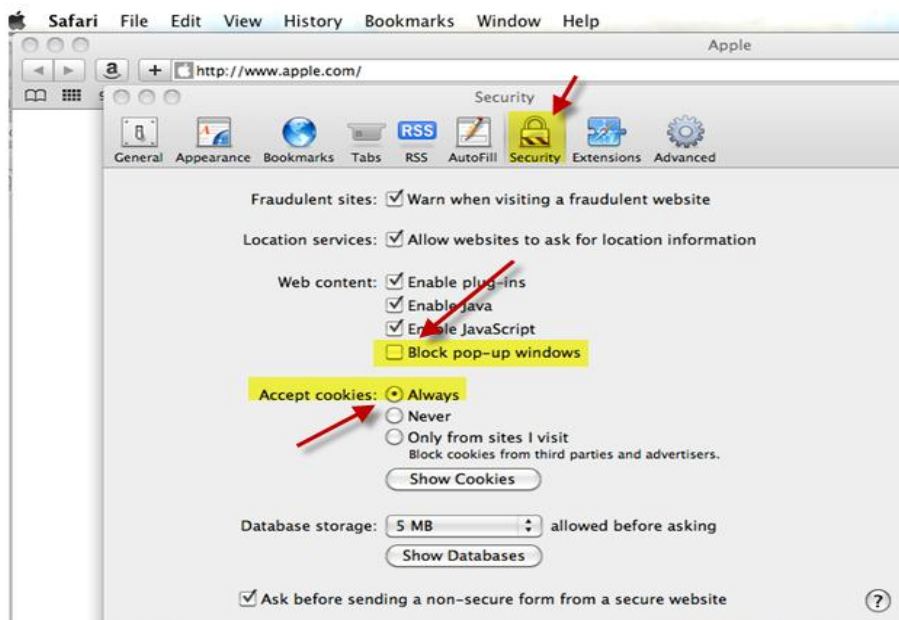
Below are step-by-step instructions for adjusting your browser to allow cookies and turn off your Pop blockers.

**Safari** - Follow these steps:

1. Click on Safari. Then click Preferences and a new window will open.



2. Click on the Security icon and under Accept cookies choose "Always". Then uncheck the "Block pop-up windows" box. Save changes.



## How to Login into Campus Cruiser and Moodle with Safari:

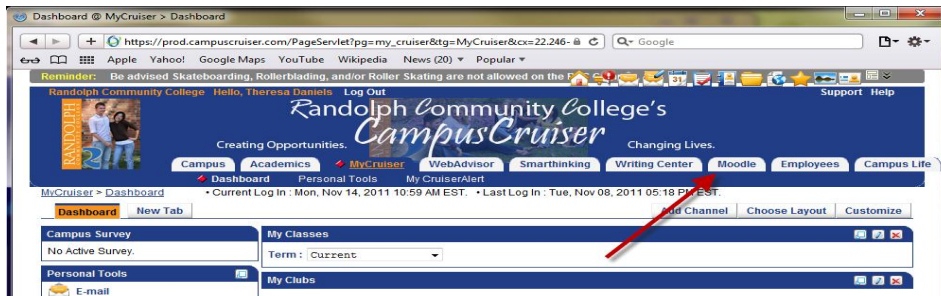
1. Now you are ready to login to Campus Cruiser. Go to <http://www.randolph.edu/> click on Students, then Campus Cruiser.



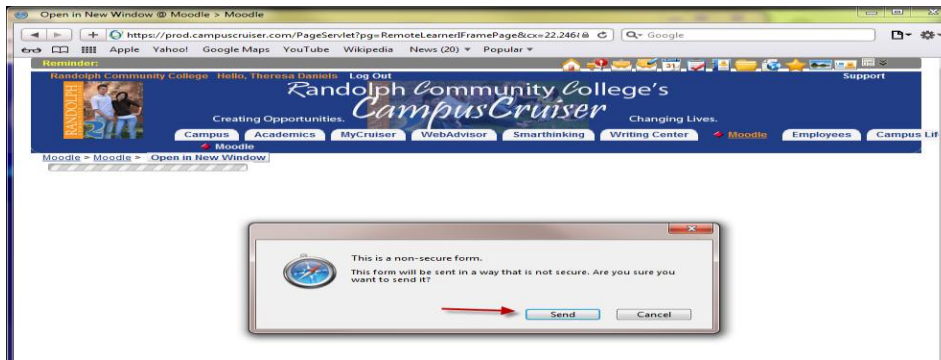
2. Login to Campus Cruiser.



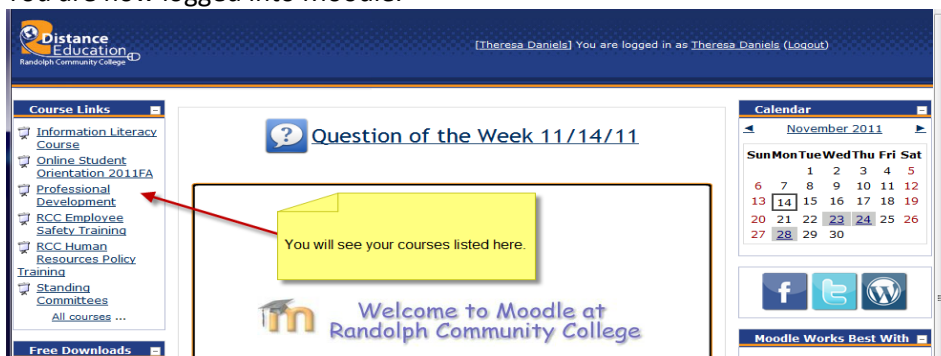
3. Click on the Moodle tab



4. Click send



5. You are now logged into Moodle.



6. Please note that the Mozilla Firefox browser works best with Moodle.